



본사 및 공장

인천광역시 남동구 고잔동 725-13번지
남동공단 152블럭 12롯데
TEL:(032)822-6600(대) FAX:(032)821-6604
<http://www.unilok.com>

Head Office and Factory

152 Block-12 Lot, Namdong Industrial Complex,
725-13, Gojan-Dong, Namdong-Gu, Incheon, KOREA.
TEL:+82-32-822-6600 FAX:+82-32-821-6604
<http://www.unilok.com>

제2공장

인천광역시 남동구 고잔동 684-7번지
남동공단 114블럭 8롯데
TEL:(032)433-6601 FAX:(032)441-7600

Secondary Factory

114 Block-8 Lot, Namdong Industrial Complex,
684-7, Gojan-Dong, Namdong-Gu, Incheon, KOREA.
TEL:+82-32-433-6601 FAX:+82-32-441-7600

Bellows Valves



Features

- Low actuation pressure
- Installation can be made either panel-mount or bottom-mount
- Handle with an open / close indicator is standardized
- 316L(Single Vacuum Melting) Electro Polished Body
- Size : 1/4" ~1" 15A~250A
- End Connection : Face Seal, Tube Butt Weld, Uni-Lok

Testing

- Every valve helium leak tested to a rate of 1×10^{-9} std cm³/s at the all sealings

Cleaning

- Ultrahigh-purity cleaning with state of arts DI water(18M Ω) Automatic Cleaning Machines.

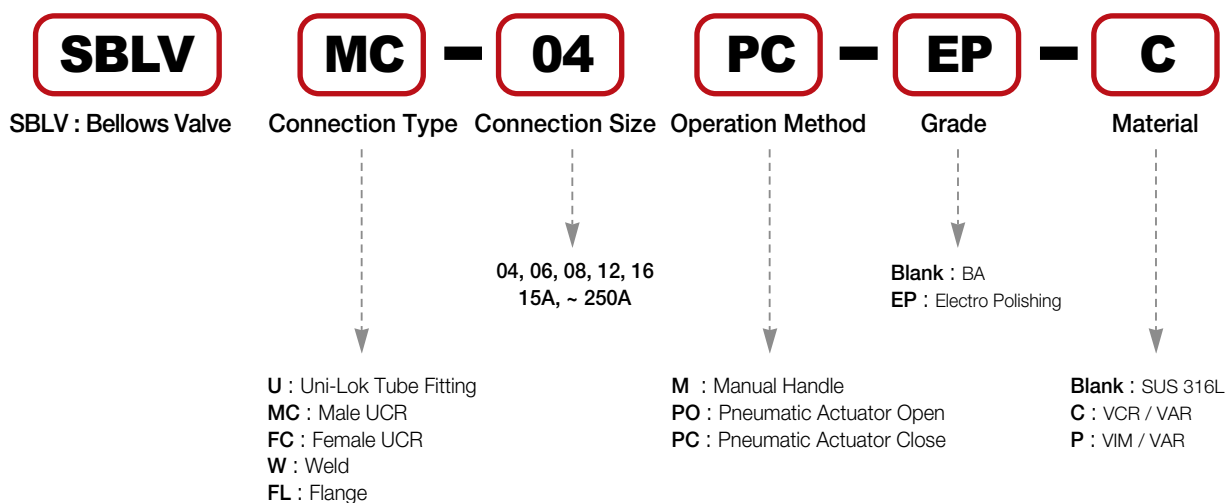
Packing

- Uni-Lok every valve with UCR end connections TS special cleaning and packaging in accordance with Uni-Lok clean and packaging method.

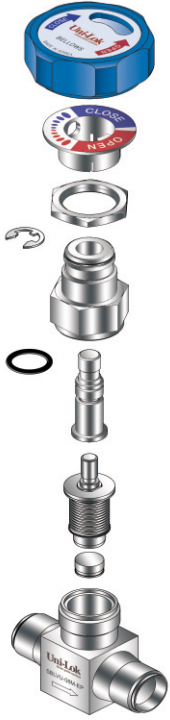
Safe Valve Selection

- When selecting a valve, the total system design must be considered to ensure safe, trouble-free performance.
- Valve function, materials compatibility adequate ratings, proper installation, and maintenance are the responsibility of the designer or user.

How to Order



▣ **Materials of Construction**



Part	Material / ASTM Specification	
	Manual Handle	Pneumatic Actuator
Body	SUS 316L Single Melt(VOD)	
	SUS 316L Double Melt(VIM-VAR)	
Gasket	PCTFE	
Disk	PCTFE	
Bellows	SUS 316L	
Stem	SUS 316L	-
O-ring	VITON	-
Bonnet	SUS 316L	-
Pneumatic Actuator		
Cylinder, Cap, Pistons	ALUMINIUM	
O-Ring	VITON	
Stem	SUS 316L	
Spring	S17700	
Bonnet	SUS 316L	

▣ **Specifications**

Size	1/4"	3/8", 1/2"	3/4"	15A
Orifice Size (φ)	4.5	8	12	15
Cv Value	0.3	0.7	2.6	2.9
Max. Working Pressure (G.)	10kgf/cm ² (0.98MPa)			
Max. Working Temp.	-10°C~80°C			
Actuator Pressure Rang	4~7kgf/cm ² (0.4~0.7MPa)			
Internal Leakage Allowance(He) Holding Time : Min 30sec	≤4*10 ⁻⁹ atm. cc/s			
External Leakage Allowance(He) Holding Time : Min 1min	≤4*10 ⁻⁹ atm. cc/s			

▣ **Internal Surface Grade**

Grade	BA	EP
Roughness Average (Ra)	0.4μm (16μ inch)	0.13μm (5μ inch)
Polishing	Machining Finish	Electro Polishing Finish

▶ Pneumatic Actuator



Open Position



Close Position

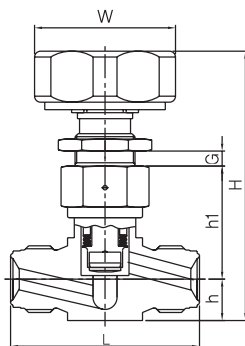


N.C. TYPE

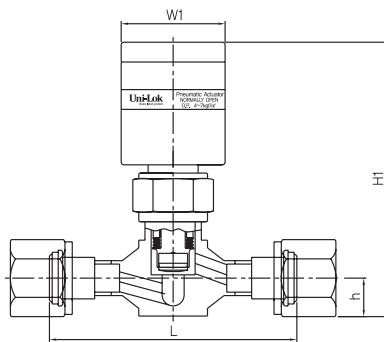
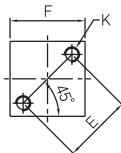


N.O. TYPE

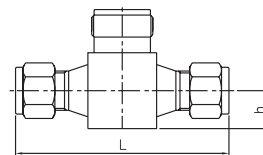
▶ End Connections



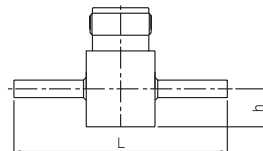
Male UCR



Female UCR



Uni-Lok



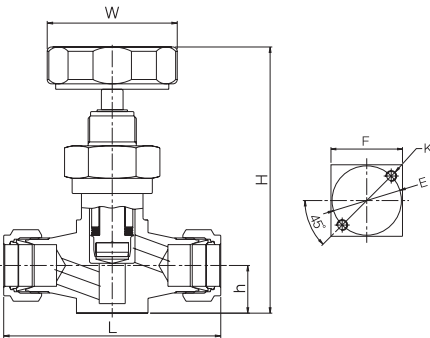
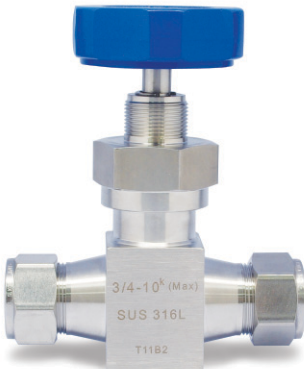
Butt Weld

▶ Table of Dimension

End Connections	Size	Ordering Number	H	H1	h1	h	L	W	W1	F	K	E	MAX G	J
UNI-LOK	1/4"	SBLVU-04M	90.0	99.6	37.7	13.8	64.2	47.0	37.8	25.0	M5	23.0	5.0	21.0
	3/8"	SBLVU-06M					77.6							
	1/2"	SBLVU-08M					83.0							
Male UCR	1/4"	SBLVMC-04M					58.0							
	3/8"	SBLVMC-06M					63.0							
	1/2"	SBLVMC-08M					70.5							
Female UCR	1/4"	SBLVFC-04M					90.0							
	3/8"	SBLVFC-06M					90.0							
	1/2"	SBLVFC-08M					90.0							
Butt Weld	1/4"	SBLVW-04M					150.0							
	3/8"	SBLVW-06M					150.0							
	1/2"	SBLVW-08M					150.0							

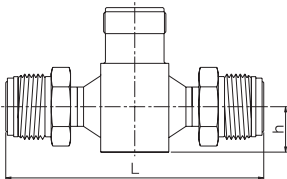
Ordering Information and Dimensions

3/4", 15A

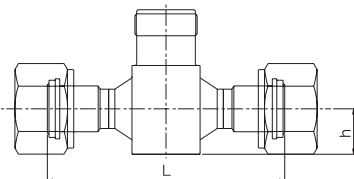


Uni-Lok

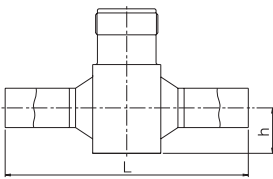
End Connections



Male UCR



Female UCR

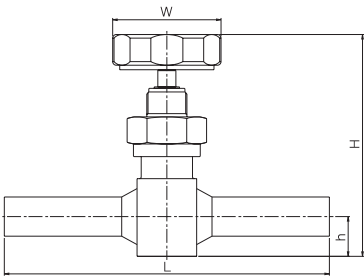


Butt Weld

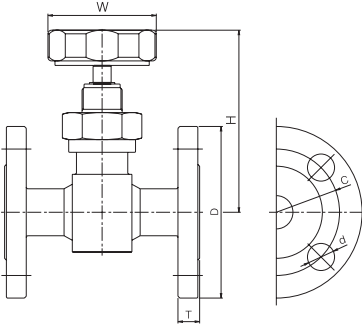
Table of Dimension

End Connections	Size	Ordering Number	H	h	L	W	F	K	E
UNI-LOK	3/4"	SBLVU-12M	123.0	22.0	100.0	Φ60	33.0	M5	Φ32
Male UCR		SBLVMC-12M			125.0				
Female UCR		SBLVFC-12M			115.0				
Butt Weld		SBLVW-12M			158.0				

End Connections



Butt Weld

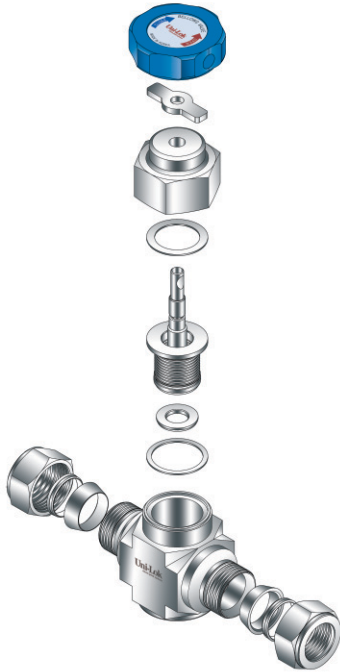


Flange

Table of Dimension

End Connections	Size	Ordering Number	H	h	L	W	D	C	d	T
Butt Weld	15A	SBLVW-15AM	102.0	24.0	180.0	Φ60	-	-	-	-
Flange		SBLVFL-15AM		-	108.0		Φ95	Φ70	Φ15	12.0

Materials of Construction



Part	Material / ASTM Specification
	Manual Handle
Body	SUS 316L Single Melt(VOD)
	SUS 316L Double Melt(VIM-VAR)
Gasket	PCTFE
Disk	PCTFE
Bellows	SUS 316L
Stem	SUS 316L
O-ring	VITON
Bonnet	SUS 316L
Stop Nut	BRASS+NICKEL Coating
Handle	ALUMINIUM

Specifications

Size	1"	20A	25A	-
Orifice Size (φ)	18	19	25	-
Cv Value	4.1	4.1	6.9	-
Max. Working Pressure (G.)	10kgf/cm ² (0.98MPa)			
Max. Working Temp.	-10°C~80°C			
Internal Leakage Allowance(He) Holding Time : Min 30sec	≤1*10 ⁻⁵ atm. cc/s			
External Leakage Allowance(He) Holding Time : Min 1min	≤1*10 ⁻⁵ atm. cc/s			

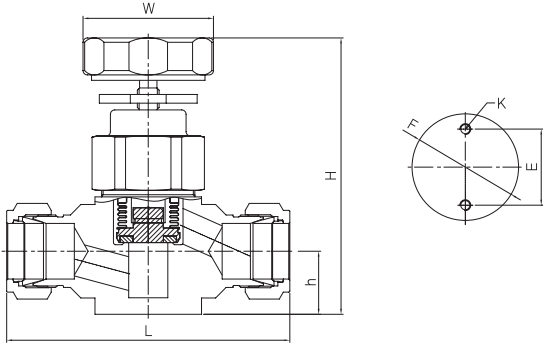
Internal Surface Grade

Grade	BA	EP
Roughness Average (Ra)	0.4μm (16μ inch)	0.13μm (5μ inch)
Polishing	Machining Finish	Electro Polishing Finish

Ordering Information and Dimensions



Handle Position

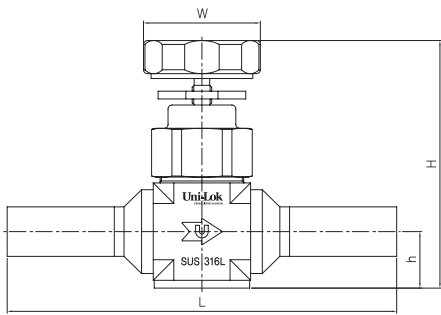


UNI-LOK

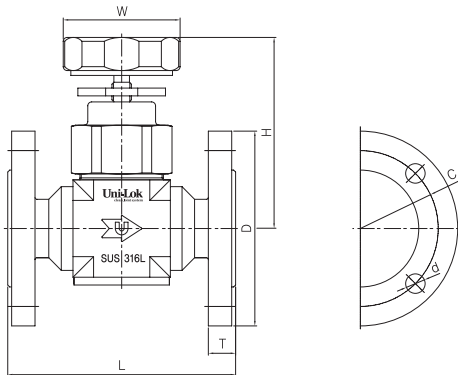
Table of Dimension

End Connections	Size	Ordering Number	H	h	L	W	F	K	E
UNI-LOK	1"	SBLVU-16M	127.0	29.0	130.2	∅60	∅49	M5	35.0

End Connections



Butt Weld



Flange

Table of Dimension

End Connections	Size	Ordering Number	H	h	L	W
Butt Weld	1"	SBLVW-16M	127.0	29.0	200.0	∅60
	20A	SBLVW-20AM	127.0	28.0	200.0	
	25A	SBLVW-25AM	127.0	33.0	220.0	

End Connections	Size	Ordering Number	H	L	W	D	C	d	T
Flange	1"	SBLVFL-16M	100.0	108.0	∅60	∅95	∅70	∅15	12.0
	20A	SBLVFL-20AM		117.0		∅100	∅75	∅15	14.0
	25A	SBLVFL-25AM		127.0		∅125	∅90	∅19	14.0