



Forged Integral Bonnet Needle Valves

SNVW Series(Socket Weld)



Specification

End Connection : Socket Weld
 Max. Operating Temperature : -53℃ (-65°F) ~ +232℃ (+450°F)
 Max. Operating Pressure : ASTM A182 F316 - 5000psi
 Brass - 3000psi

Materials of Construction

No.	Description	316SS Valve	Brass Valve
1	Body	316SS	Brass
2	Stem	316SS	Brass
3	Packing Ring	316SS	Brass
4	Packing	PTFE	PTFE
5	Packing Gland	316SS	Brass
6	Packing Nut	316SS	Brass
7	Panel Nut	316SS	Brass
8	Handle	Standard	Round(PC)
		Alternative	Bar(316SS)

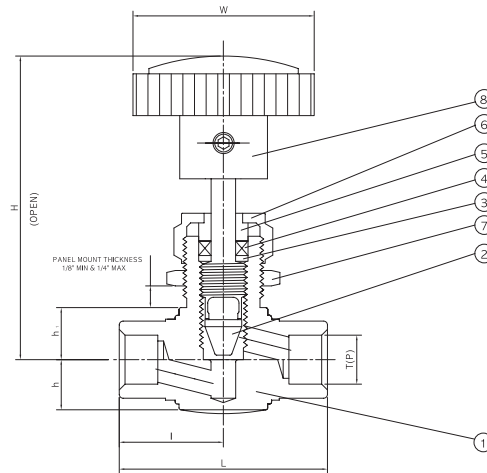


Table of Dimension

Unit : mm

Part No.	Applicable Tube		Orifice	Cv	L	l	h	h1	H (Open)	W	Panel Hole Drill Size
	Nom.Size	O.D									
SNVW-04T	1/4	6.35	4.4	0.37	42.0	21.0	9.5	11.0	59.0	35.0	13.5
SNVW-06T	3/8	9.52	6.4	0.73	56.0	28.7	12.7	12.7	71.0	47.0	20.0
SNVW-08T	1/2	12.7	6.4	0.73	56.0	28.7	12.7	12.7	71.0	47.0	20.0
SNVW-04P	1/4	13.8	6.4	0.73	56.0	28.7	12.7	12.0	71.0	47.0	20.0
SNVW-06P	3/8	17.3	9.5	1.80	76.0	38.0	19.0	19.0	99.0	56.0	23.0
SNVW-08P	1/2	21.7	9.5	1.80	76.0	38.0	19.0	19.0	99.0	56.0	23.0

T : Tube Size, P : Pipe Size

Note : Dimensions are reference only, subject to change without prior notice.