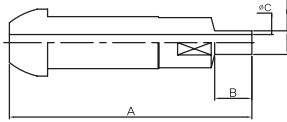


Cylinder Connectors

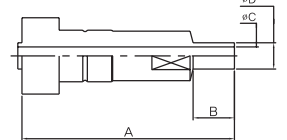
Gland / Bearing / Nut

Gland

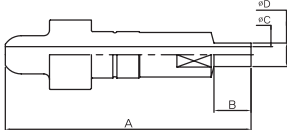
Gland A



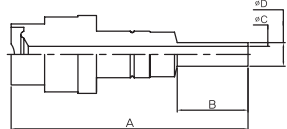
Gland B



Gland C



Gland D



Part No.	A	B	C	D
UGL06S	65.30	10.00	4.35	6.35
UGL08S	65.30	10.00	4.35	6.35

Part No.	A	B	C	D
UGL01S	52.50	10.00	4.35	6.35
UGL02S	55.50	10.00	4.35	6.35
UGL03S	58.00	10.00	4.35	6.35

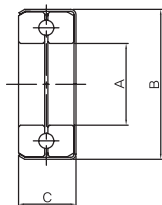
Part No.	A	B	C	D
UGL04S	66.20	10.00	4.35	6.35
UGL05S	66.80	10.00	4.35	6.35
UGL09S	66.70	10.00	4.35	6.35

Part No.	A	B	C	D
DISS-GL632	63.80	19.05	4.35	6.35
DISS-GL634	63.80	19.05	4.35	6.35
DISS-GL636	63.80	19.05	4.35	6.35
DISS-GL638	63.80	19.05	4.35	6.35
DISS-GL640	63.80	19.05	4.35	6.35
DISS-GL642	63.80	19.05	4.35	6.35
DISS-GL712	63.80	19.05	4.35	6.35
DISS-GL714	63.80	19.05	4.35	6.35

Part No.	A	B	C	D
UGL07S	66.06	10.00	4.35	6.35
UGL10S	66.70	10.00	4.35	6.35
UGL11S	55.50	10.00	4.35	6.35

Part No.	A	B	C	D
DISS-GL716	63.80	19.05	4.35	6.35
DISS-GL718	63.80	19.05	4.35	6.35
DISS-GL720	63.80	19.05	4.35	6.35
DISS-GL722	63.80	19.05	4.35	6.35
DISS-GL724	63.80	19.05	4.35	6.35
DISS-GL726	63.80	19.05	4.35	6.35
DISS-GL728	63.80	19.05	4.35	6.35

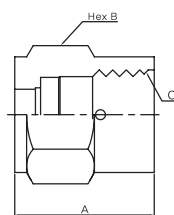
Bearing



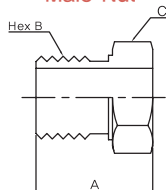
Part No.	A	B	C
UBR01	12.80	18.50	5.70
UBR02	12.80	23.50	9.00

Nut

Female Nut



Male Nut



Part No.	A	Hex B	C	Part No.	A	Hex B	C
UF0830R	35.00	30.00	0.830-14NGO-RH-INT	UFJS22R	35.00	30.00	JIS22-14-OR
UF0830L	35.00	30.00	0.830-14NGO-LH-INT	UFJS22L	35.00	30.00	JIS22-14-OL
UF0908R	35.00	30.00	0.830-14NGO-RH-INT	UFJS23R	35.00	30.00	JIS23-14-OR
UF1035R	36.00	32.00	1.035-14NGO-RH-INT	UFJS26R	36.00	32.00	JIS26-14-OR
UF1035L	36.00	32.00	1.035-14NGO-LH-INT	UFJS26L	36.00	32.00	JIS26-14-OL
UFJS21R	35.00	30.00	JIS21-14-OR	DISS-UF1035R	36.00	32.00	1.035-14NGO-RH-INT
UFJS21L	35.00	30.00	JIS21-14-OL	DISS-UF1130R	36.00	35.00	1.125-14NGO-RH-INT

Part No.	A	B	C
UM0960R	29.00	27.00	0.960-14NGO-RH-EXT
UM0960L	29.00	27.00	0.960-14NGO-LH-EXT
UM0803R	29.00	24.00	0.803-14UNS-2A-RH-EXT
UM0880L	29.00	24.00	0.988-14BGO-RH-INT

Note : Dimensions are in mm and reference only, subject to change without prior notice.